

FIRESAFE STEEL SQUARE CABLE CONDUIT

PRODUCT DESCRIPTION

FIRESAFE square cable conduit has been tested and developed for use in fire resistance class EI 45 to EI 120.

FIRESAFE square cable conduit is specifically designed for multiple areas of use as there is a detachable cap positioned longitudinally, so that the conduit can be used on existing cables or plastic conduits in the penetration.

FIRESAFE square cable conduit is made of 1 mm thick red powder-coated steel. The cable conduit is coated internally with an intumescent laminate in the middle of the conduit, that quickly closes the penetration in the event of a fire. In addition FIRESAFE square cable conduit contains a square cold-smoke seal shaped as black plug in each end.

The cable conduits are available in lengths 150, 250 and 400 mm.

Cable conduit 95 x 95 mm. Inside dimension: H x W: 78 x 78 mm

Cable conduit 65 x 65 mm. Inside dimension: H x W: 53 x 53 mm

AREAS OF USE

Fire classified floors according to EN 1363-1: Coatings / Molded Covers (Density 600 - 650 kg/m³) ≥ 150mm.

Fire-classified walls according to EN 1363-1: Plasterboard or masonry / cast construction (density 600 - 650 kg/m³) ≥ 100mm.

FIRESAFE square cable conduit is used in combination with FIRESAFE GPG MORTAR in multiple or single penetrations.

Square cable conduit can be used with all types of electric cable and telecom cables with a diameter of ≤ 21 mm and with plastic electrical cable conduits with a diameter of ≤ 32 mm, or it can remain empty for later use.

INSTALLATION OF CABLE AND PLASTIC CABLE CONDUIT

The cold smoke seal (black plugs) in each end of the conduit are removed when pulling cables and reinstalled after the cables have been pulled through the conduit. The smoke seal can easily be made to fit the opening of the conduit with a knife or scissors.

PRODUCT DOCUMENTATION

RISEFR AA-050 and ETA 15/0026 for FIRESAFE GPG MORTAR.

INSTALLATION AND FIRE RESISTANCE

See installation instructions for FIRESAFE GPG MORTAR.

DELIVERY FORM

Delivered as single product.

ARTICLE NO

95 x 95 x 150 mm. FS - Article No : 102 014. EI- No : 1217863

95 x 95 x 250 mm. FS - Article No : 102 012. EI- No : 1217864

95 x 95 x 400 mm. FS - Article No : 102 013. EI- No : 1217865

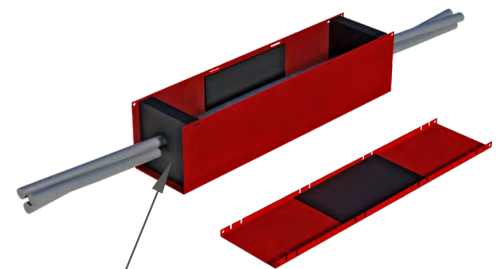
65 x 65 x 150 mm. FS - Article No : 102 009. EI- No : 1217866

65 x 65 x 250 mm. FS - Article No : 102 010. EI- No : 1217867

65 x 65 x 400 mm. FS - Article No : 102 011. EI- No : 1217868

HEALTH AND SAFETY

There are no health or safety issues related to the product.



20 mm synthetic rubber (black plugs) is fitted after installation

